

## M583c on a Caterpillar D8K

### Lifting Capacity

- Maximum Lift: 140,000 lb (63,504 kg)\*
- Maximum Load: 119,000 lb (53,978 kg)\*
- Maximum Working Load: 72,000 lb (32,659 kg)\*
- \*@ 4 ft overhang

### Boom and Blocks

- Standard Boom: 20 ft (6.1 m)
- Boom Line Parts: 5
- Load Line Parts: 6
- Typical Hook Speed (HI/LOW): 60/30 ft/min (18.3/9.1 m/min)

### Hydraulic System

- Directional Control Valve: 3-Section, open center with manual levers
- Maximum Operating Pressure: 3,500 psi (241 bar)
- Maximum Allowable Flow: 70 gpm (265 l/min)

### Winches

#### Boom Winch

- Planetary, two-speed, dual brake system
- Wire rope installed: 180 ft (54.9 m)
- Max. cable capacity: 242 ft (73.8 m)
- Wire Rope Diameter: 3/4 in (19 mm)\*

#### Load Winch

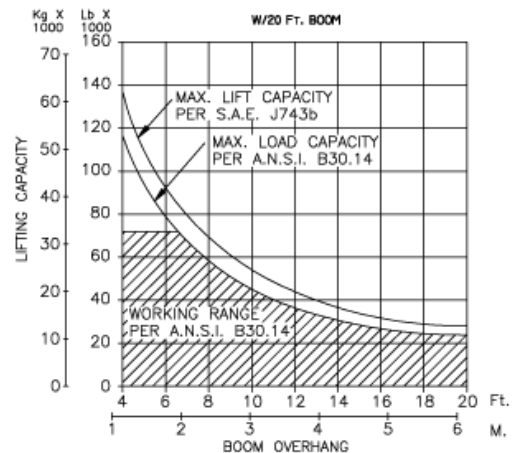
- Planetary, two-speed, dual brake system, free-fall
- Wire rope installed: 180 ft (59.4 m)
- Max. cable capacity: 423 ft (129 m)
- Wire Rope Diameter: 3/4 in (19 mm)\*
- \* Minimum breaking strength: 58,800 lb (26,672 kg)

### Weights

- Removable counterweight segments: 12 segments @ 1,400 lb (635 kg) each
- Total extendible counterweight: 25,000 lb (11,340 kg)
- Total sideboom attachment weight: 42,100 lb (19,097 kg)



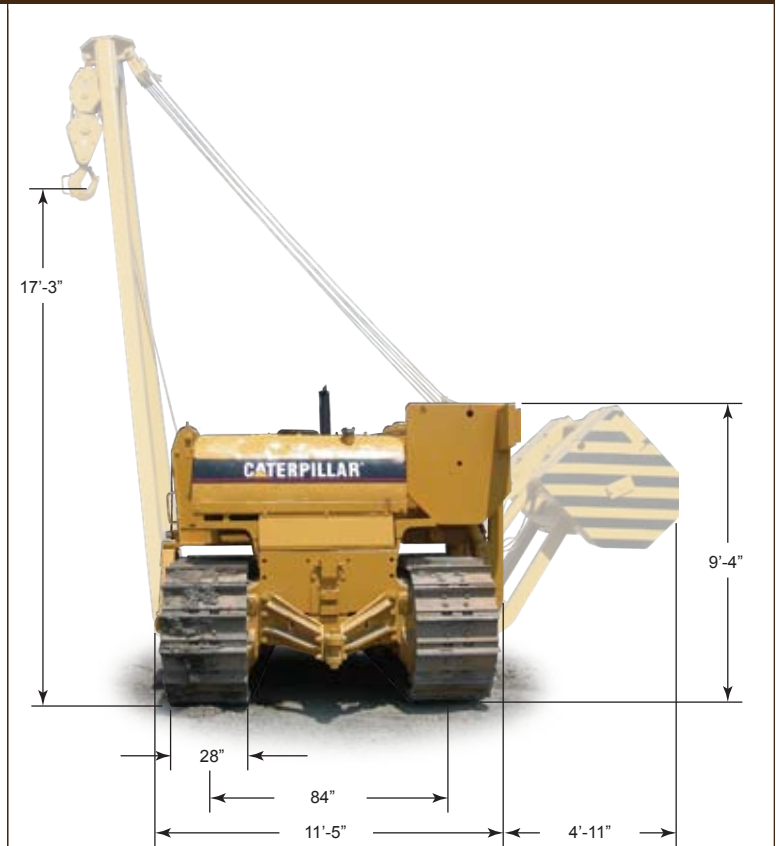
## M583C Hydraulic Sideboom Attachment



## M583c on a Caterpillar D8K

### Features

- Tubular A-Frame boom engineered for exceptional support at maximum lift capacity and easy detachment.
- Three lever hydraulic control system allows simultaneous control of load and boom functions. The controls are easy to operate and require minimal operator training.
- Hydraulic boom stop automatically prevents system over travel and damage to boom
- System employs tractor's existing hydraulic pump, filter and reservoir for convenience of replacement parts and maintenance.
- Sideboom features quick release hinge pins for easy boom removal and maintenance.
- Hydraulic oil cooler.
- Hydraulically operated, four-bar linkage counterweight system adds maximum stability and lifting capability. Low, compact design provides balanced weight distribution for optimum operating control and excellent visibility.
- Counterweight segments can be easily removed for shipping.



## M583c Hydraulic Sideboom Attachment

Midwestern's sidebooms are manufactured, installed, and tested to meet the requirements outlined in ANSI/AMSE B30. 14-2004 for sideboom tractors. Capacity ratings are made with the tractor on flat, level ground with the rating load hanging from the load-line hook per SAE J743-92. All Midwestern structural welding complies with the American Welding Society (AWS) Code Welding Earthmoving and Construction Equipment D14.3-94.